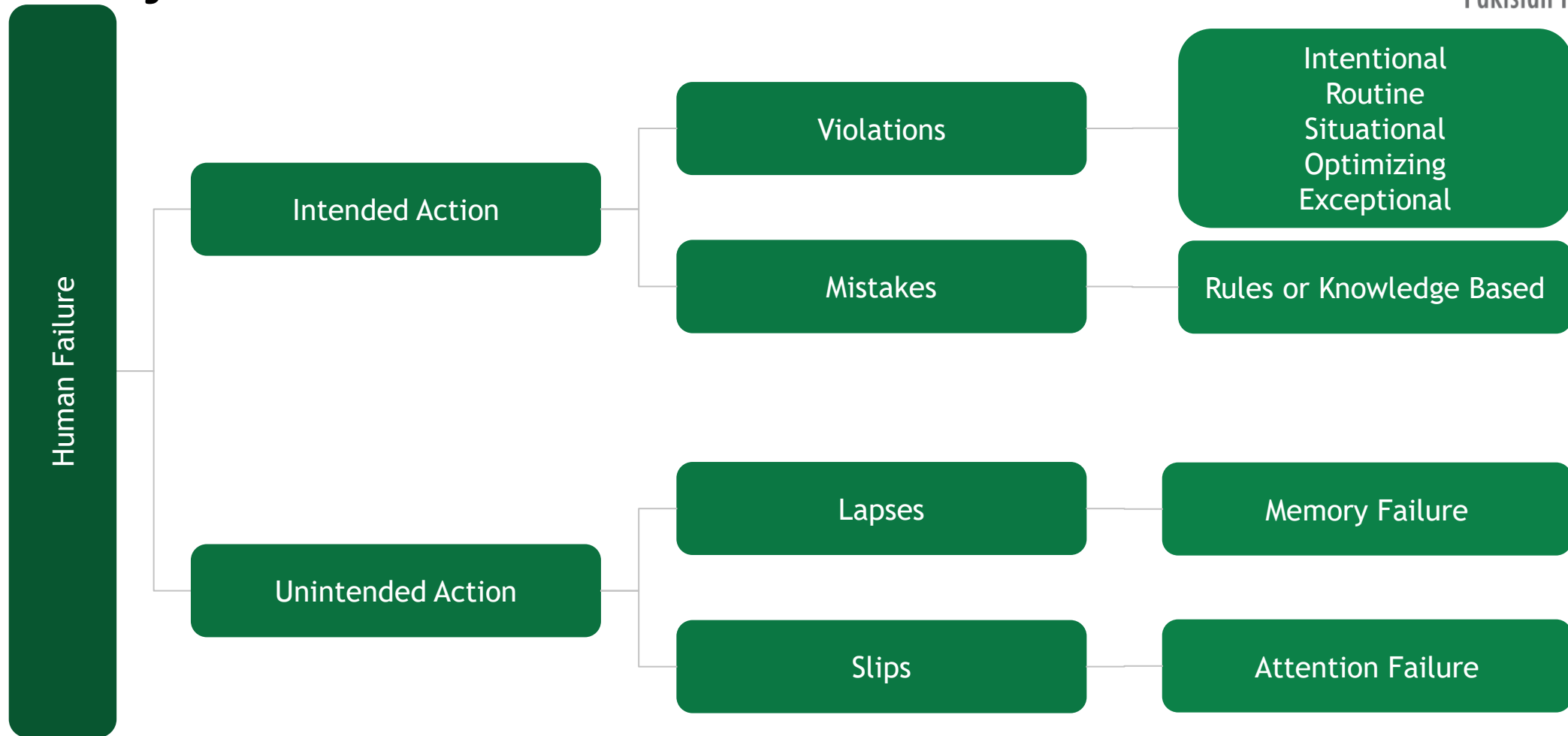


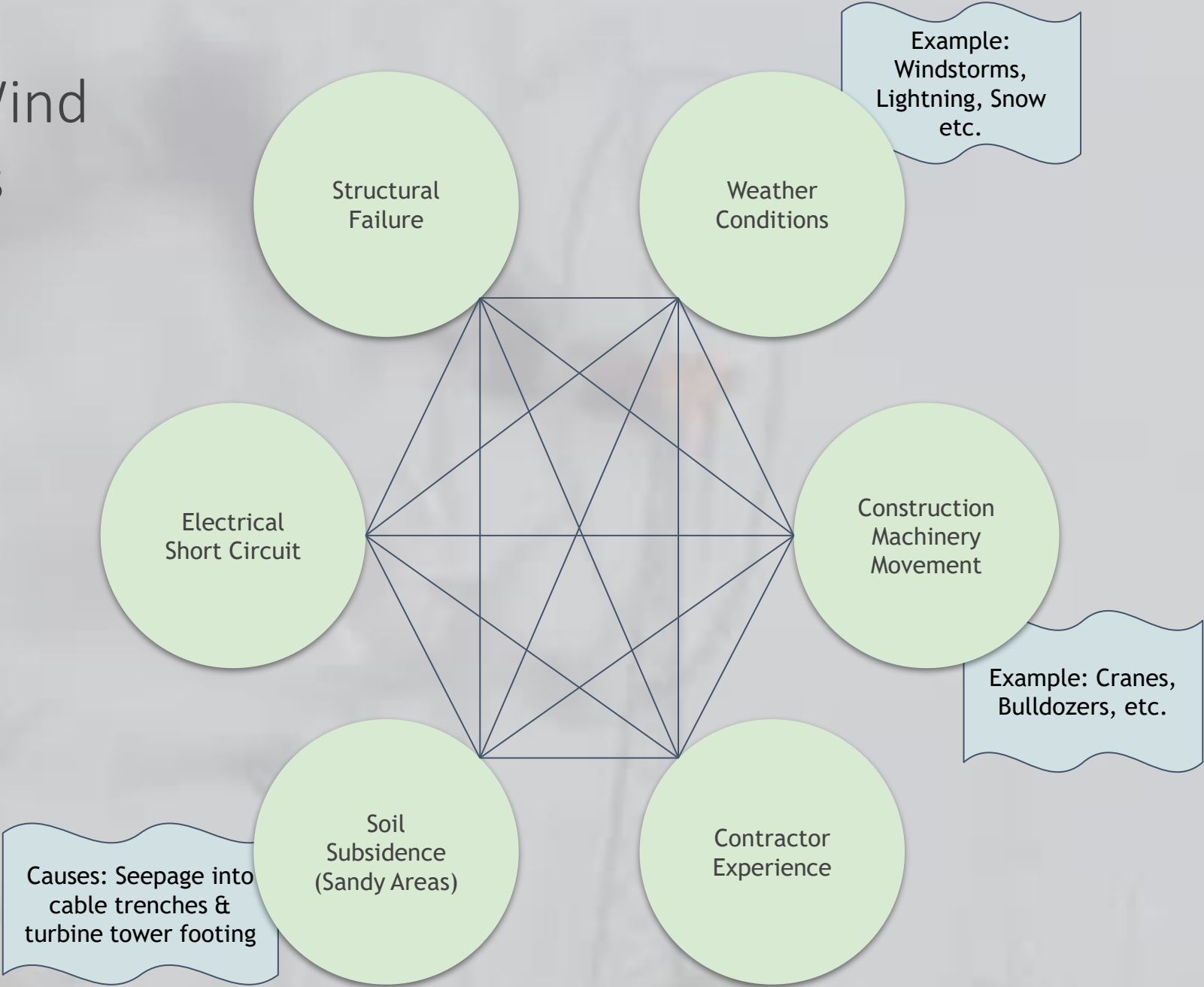
# Major Causes of Accidents



Sources of Human Failure



# Causes of Wind Farm Claims



# Unopened Equipment Submerged



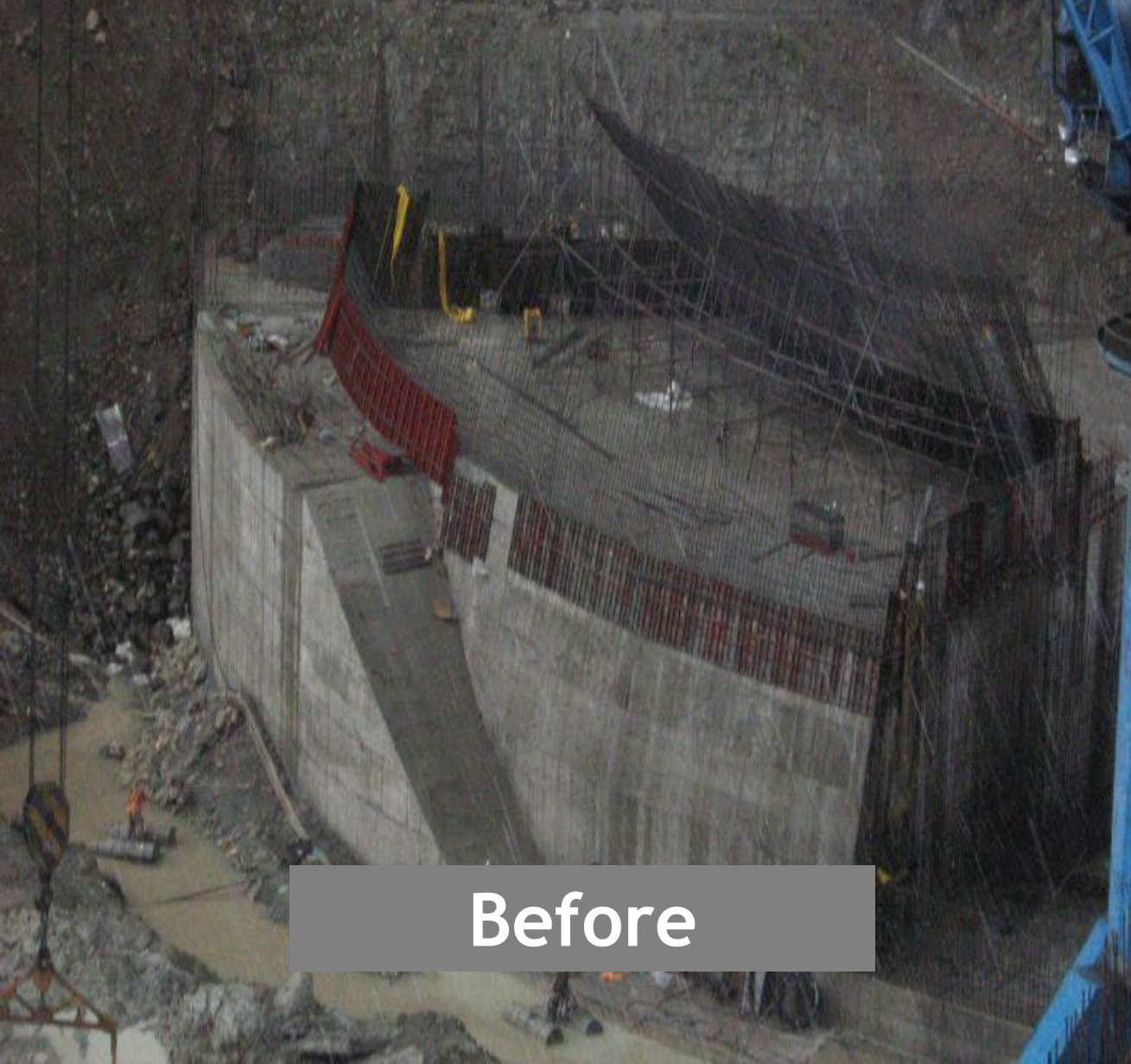
# Unopened Equipment Submerged



# Gas Turbine Compressor Stator Vanes Damage



# Powerhouse



Before



After

# Solar Panels Damaged by Windstorm







- ❑ Flood & Inundation Losses: Return period based design calculations need to be revisited because **climate change weather patterns** mean that statistical models now need to include safety margins in heavy rainfall regions
- ❑ Project Construction delays always **increase exposure** for underwriters
  - ❑ Post Covid
  - ❑ Port congestion
  - ❑ shipping backlog
- ❑ Increasing knowledge base of **Cyber Crime** losses and investigations
- ❑ Regular follow up by **Insurers** and **Risk surveys** are always helpful
- ❑ Continuous **Learning** and **Retraining**

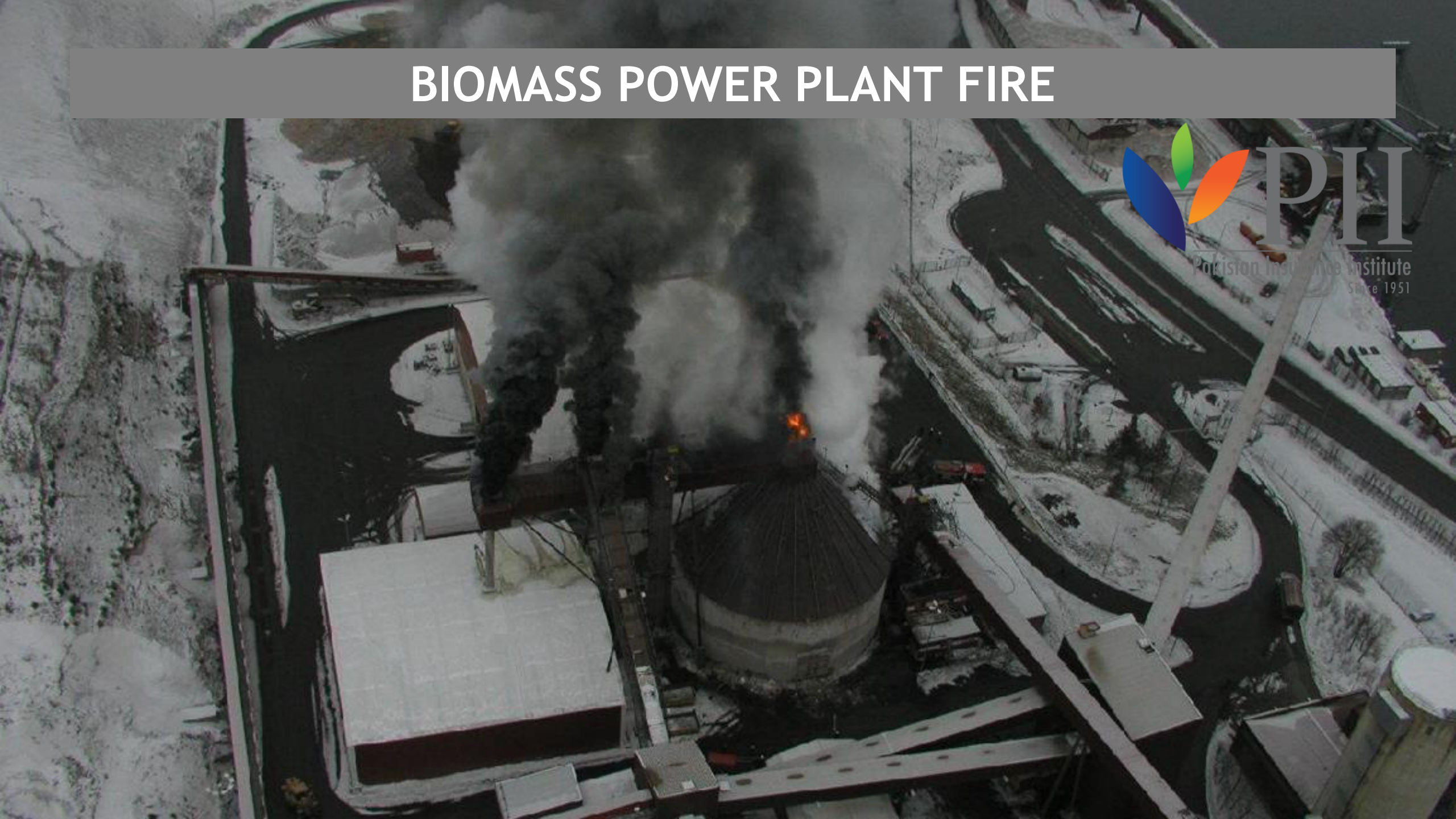
# Gas Turbine Rotor Shaft damage



# Wind Turbine During Windstorm



# BIOMASS POWER PLANT FIRE



# Buses Burning in Brazil



## Case 2

A Gas Gen Set of 1200 KW was commissioned on 01/04/2020. The unit was insured with a total sum insured of Rs.20, 000,000 which included freight, duties, cost of erection etc.

Endorsement No. 331, 332, 701, 702 & 344-A were attached to & formed part of the policy. A **deductible of Rs.100,000** for each & every loss was applicable as per policy.

On 01/05/2023 the Gen Set was damaged due to accidental breakage of exhaust valve in the cylinder head, broken pieces of which entered other cylinders causing damages to various items.

It was noted that the **sum insured of Rs.**

Dismantling of the Gen Set was carried out and the following list of damaged parts was prepared:

<b>Description</b> -----	<b>Qty</b> -----
Cylinder Heads	02 Nos.
Pistons	04 Nos.
Cylinder Liners	04 Nos.
Connecting Rod Sleeves	02 Nos.
Bushing	02 Nos.
Valve Guides	12 Nos.



Based on the quotation of machinery suppliers / repairers, the insured submitted their claim for parts & repair charges as under. The cost of parts did not include 16% GST: -

<b>Description</b>	<b>Qty</b>	<b>Rate</b>	<b>Amount</b>
Cylinder Heads	02 Nos.	Rs.500,000	Rs. 1,000,000
Pistons	04 Nos.	Rs.150,000	Rs. 600,000
Cylinder Liners	04 Nos.	Rs. 50,000	Rs. 200,000
Connecting Rod Sleeves	02 Nos.	Rs. 10,000	Rs. 20,000
Bushing	02 Nos.	Rs. 5,000	Rs. 10,000
Valve Guides	12 Nos.	Rs. 5,000	<u>Rs. 60,000</u>
	Total of Parts:	Rs. 1,890,000	
	Labor Charges		Rs <u>400,000</u>
	<b>Total Claim:</b>	<b>Rs.2,290,000</b>	

As a result of negotiations with the repairers, **5% discount** was obtained on parts and the final *labor charges* were agreed at Rs. **350,000**.

*The new replacement cost* of a 1200 KW Gas Gen Set of similar make, model & capacity including freight, duties, cost of erection etc. was *estimated at Rs. 25,000,000*.

The **salvage value** of the damaged parts was agreed at **Rs. 10,000** with the insured and the same was adjusted in the claim.

**Q.** Prepare an Assessment of the loss keeping in view of above information.